

# DUNVEGAN CASTLE & GARDENS RESTORATION PROJECTS 2008 to 2025



# THE VISION

The unique history of Dunvegan Castle & Gardens

- **PRESERVED**
- **DEVELOPED**
- **SHARED**





# OUR MISSION

To conserve the heritage of Dunvegan Castle & Gardens by being commercially successful in all we do in order to enable continuous reinvestment in the castle, gardens and the wider estate.



**DUNVEGAN**  
CASTLE & GARDENS

**Some examples of what has been  
achieved since 2008...**





# DUNVEGAN CASTLE'S ROOF RESTORATION - 2010



**DUNVEGAN**  
CASTLE & GARDENS



# A NEW LEAD ROOF & RWPs REPLACED THE OLD LEAKING COPPER ROOF - 2010

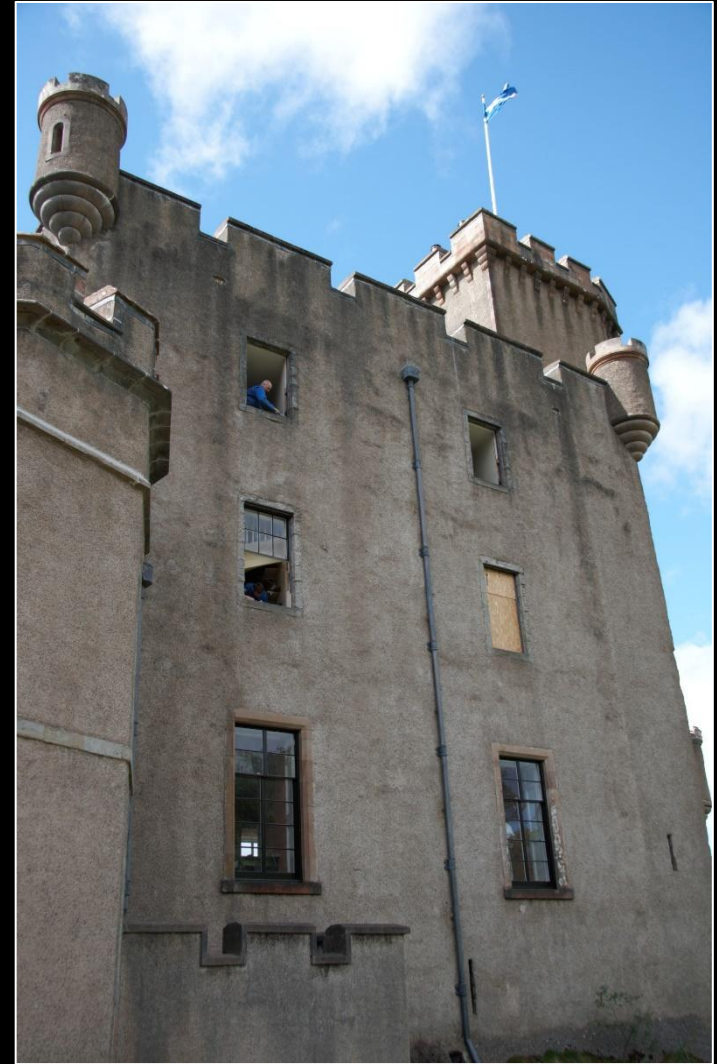


# 16<sup>th</sup> CENTURY PIPERS' GALLERY – REINSTATEMENT OF THE CARVED SANDSTONE BALUSTRADES, THE ORIGINAL PAVING SLABS, DECORATIVE SPOUTS & COPINGSTONES - 2010





# DUNVEGAN CASTLE'S WINDOW RESTORATION – 2010/2011 and 2019-21



**DUNVEGAN**  
CASTLE & GARDENS



# REMOVAL OF VEGETATION TO REVEAL DUNVEGAN CASTLE'S 13<sup>th</sup> CENTURY RAMPART WALL & SEAGATE – 2016/2017



**DUNVEGAN**  
CASTLE & GARDENS



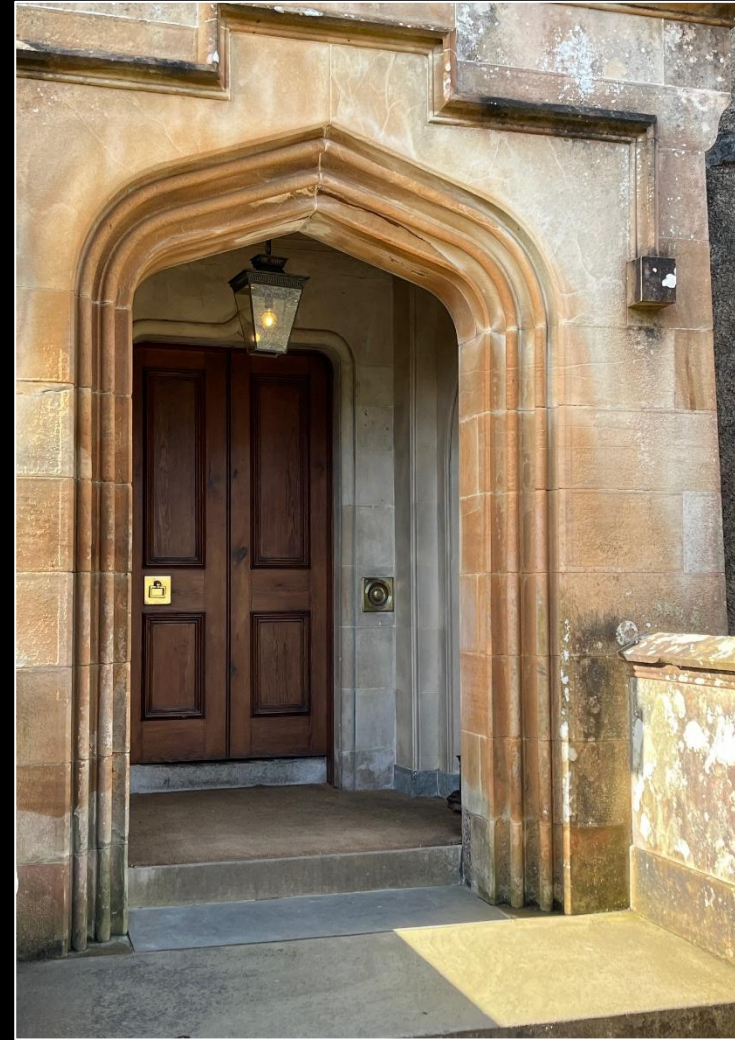
# RESTORATION OF STONE WALKWAYS ON THE GUN COURT AND 13<sup>th</sup> CENTURY PASSAGE TO THE SEAGATE TO IMPROVE PUBLIC ACCESS – 2017/2019



  
**DUNVEGAN**  
CASTLE & GARDENS



**PORTICO ENTRANCE – PAINTED STONE EFFECT APPLIED TO THE  
INTERNAL WALLS TO MATCH THE VICTORIAN SANDSTONE WITH A  
PERIOD LANTERN & BRASS ENTRY PULL BELL REINSTATED - 2017**



**DUNVEGAN**  
CASTLE & GARDENS

**ENTRANCE HALL - NEW COLOUR SCHEME, LIGHTING DESIGN, A LOUIS XV STYLE LANTERN, PERSIAN STAIR RUNNER, REVEAL OF THE RECESSED ALCOVES & RESTORATION OF THE ORIGINAL PAINTED FLAT-PANELED CEILING AND A PAINTED MAHOGANY WOOD-EFFECT APPLIED TO THE DOORS - 2016**





# TRANSFORMATION OF THE 1<sup>st</sup> FLOOR CORRIDOR INTO A FORMAL PICTURE GALLERY WITH NEW COLOUR SCHEME, PICTURE LIGHTS, PERIOD PENDANTS & A PERSIAN CARPET RUNNER - 2016



**DUNVEGAN**  
CASTLE & GARDENS



# THE CHIEF'S BEDROOM WITH NEW OAK FLOOR, PERIOD WALLPAPER, PICTURE LIGHTS, RESTORED GEORGE IV FOUR POSTER BED WITH A MARBLE BURFORD MANTLEPIECE- 2016



**REDECORATION OF THE LIBRARY WITH NEW OAK FLOOR, A 1950s  
CONCRETE MANTLEPIECE REPLACED BY A GEORGIAN MARBLE  
ANTIQUE, NEW PICTURE LIGHTS, MAHOGANY PAINTED WOOD-  
EFFECT APPLIED TO THE LIBRARY CABINETS WITH PERIOD  
WALLPAPER – 2016**





# REDECORATION OF THE DINING ROOM WITH NEW OAK FLOOR, PICTURE LIGHTS, ANTIQUE PERSIAN CARPET WITH FABRIC WALLPAPER - 2017





**REDECORATION OF THE DRAWING ROOM - NEW OAK FLOOR  
REPLACED A 1970s PINE FLOOR, NEW PICTURE LIGHTS,  
ANTIQUE PERSIAN CARPET WITH FABRIC WALLPAPER - 2018**





# 1960s PINE CLADDING REMOVED TO REVEAL THE ORIGINAL MEDIEVAL STONEMASONRY AROUND THE ENTRANCE TO THE PIT DUNGEON WITH NEW LIGHTING AND OAK FLOOR - 2018



**DUNVEGAN**  
CASTLE & GARDENS



# REDECORATION OF THE NORTH ROOM WITH NEW COLOUR SCHEME, OAK FLOOR, PICTURE LIGHTS, PERSIAN CARPET & ANTIQUE GILT-BRONZE PENDANT LIGHTING - 2018



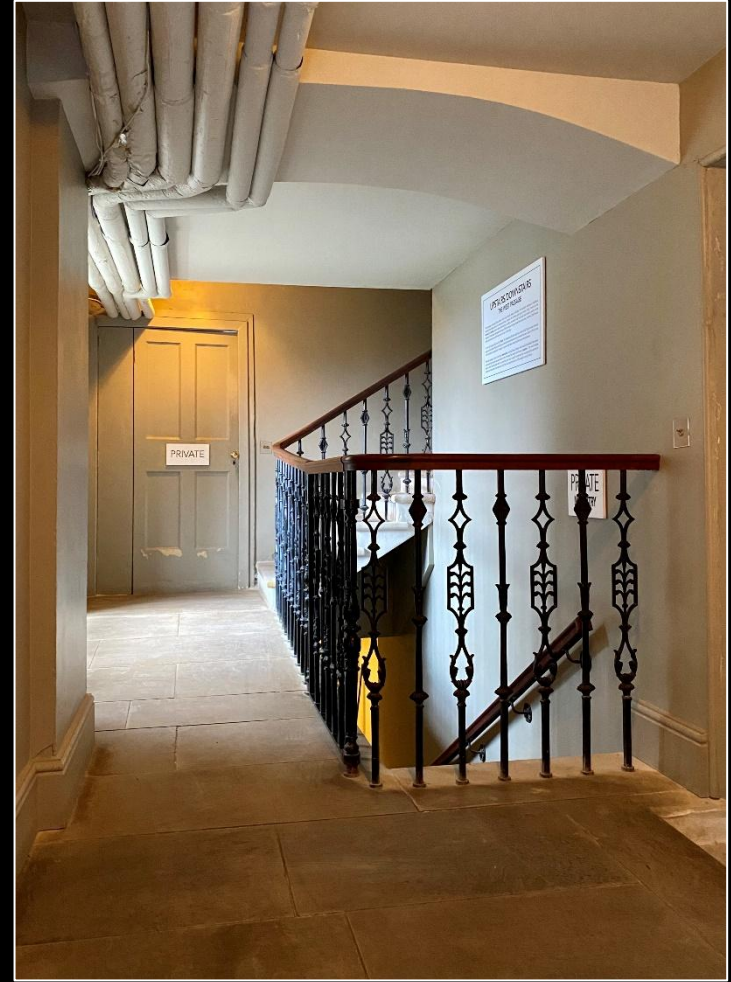
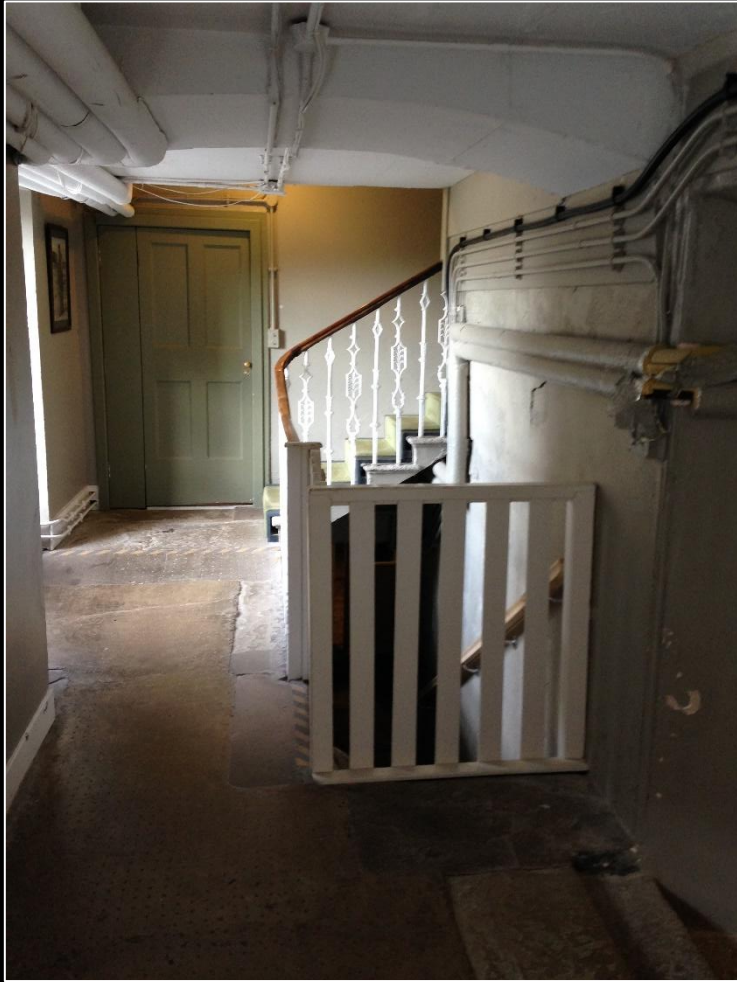
# RESTORATION OF WEST PASSAGE – NEW SANDSTONE SLABS & STEPS REPLACED CEMENT REPAIRS, NEW STAIR HANDRAIL AND CELLAR GATE, 1920s STYLE PENDANT LIGHTING - 2017



**DUNVEGAN**  
CASTLE & GARDENS



# RESTORATION OF WEST PASSAGE CONT'D - 2017



**DUNVEGAN**  
CASTLE & GARDENS



# DUNVEGAN CASTLE'S ENTIRE COLLECTION UNDERWENT A PHASED RESTORATION BETWEEN 2008 - 2025





# DUNVEGAN CASTLE'S COLLECTION RESTORATION CONT-D.





# DUNVEGAN CASTLE'S MEMORIAL GATES WERE RESTORED AND A NEW TICKET OFFICE BUILT – 2010/2025





# CASTLE CAR PARK WAS RESURFACED WITH NEW WCs & THE MACLEOD ESTATE COLOUR SCHEME TO REPLACE THE WALL'S ICECREAM COLOURS - 2009





# CASTLE CAR PARK WAS RESURFACED IN 2009 WITH MAJOR EXTENSION WORKS UNDERTAKEN BETWEEN 2022-24





# THE GIFT SHOP & CAFE IN DUNVEGAN CASTLE'S CAR PARK WERE REFURBISHED INSIDE AND OUT – 2012 & 2025



# MACLEOD TABLES CAFE – REFURBISHED 2012-2017 WITH A NEW SERVING AREA, OFFICE, STORE. EXTENSION ADDED 2025





# RHODODENDRONS ON MAIN DRIVE REMOVED TO REVEAL VIEWS OF CASTLE & GARDENS FROM MAIN GATES 2024



**DUNVEGAN**  
CASTLE & GARDENS



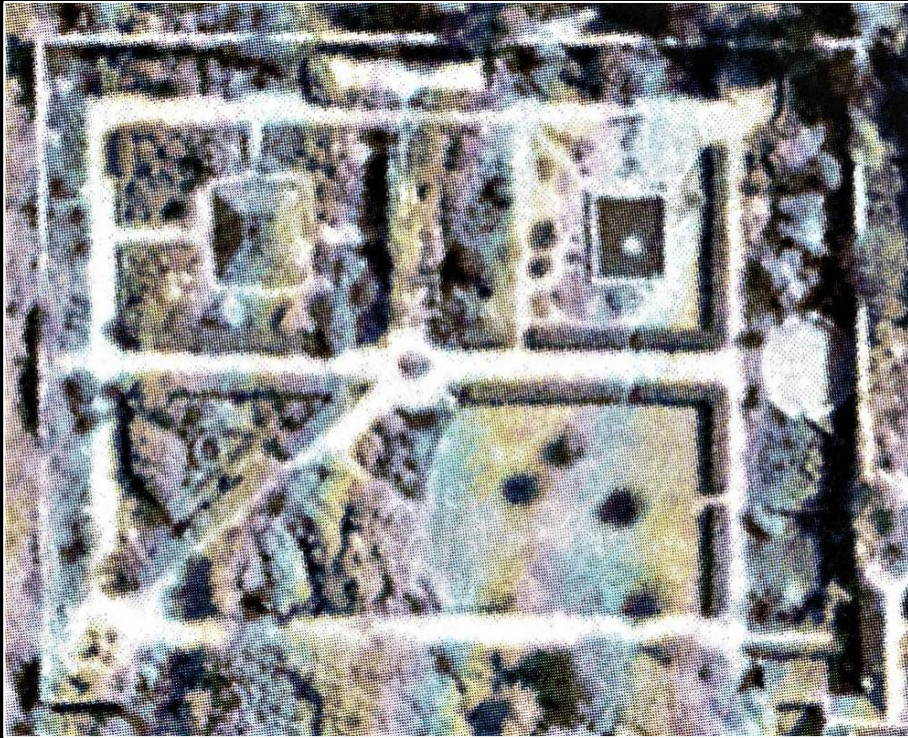
# RHODODENDRON TUNNEL REPLACED WITH HEATHER BORDERS & FORMAL BEECH HEDGE TO IMPROVE THE AESTHETIC - 2015



**DUNVEGAN**  
CASTLE & GARDENS



# FORMAL 'CROSS SHAPED' DESIGN WAS IMPLEMENTED IN THE WALLED GARDEN - 2014





# **WATER LILY POND IN THE WALLED GARDEN – OVERALL DESIGN IMPROVED BY REMOVING THE STONE WALLS, ADDING NEW PATHS AND REPLACING THE GRAVEL BEDS WITH FLOWER BEDS - 2009**





# AN ELEGANT VICTORIAN STYLE GLASS HOUSE INSTALLED IN THE WALLED GARDEN - 2013

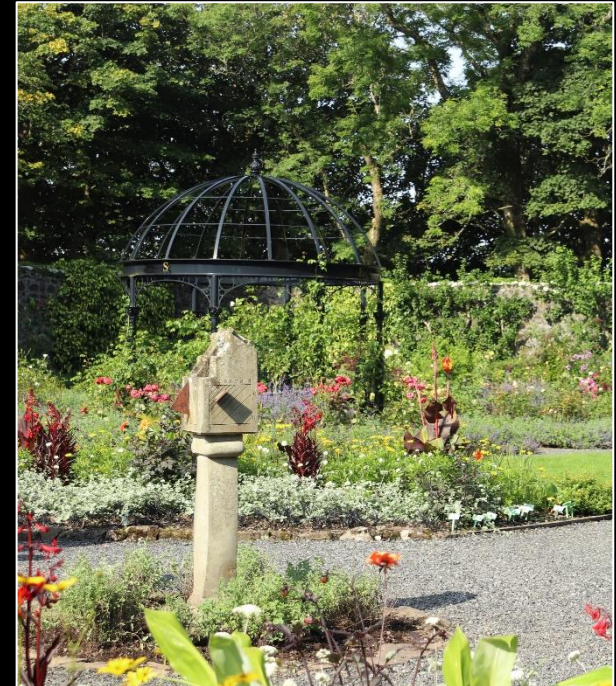




# NEW GAZEBO SURROUNDED BY ROSE BEDS & FORMAL CHERRY TREE LINED AVENUE IN THE WALLED GARDEN - 2014



  
**DUNVEGAN**  
CASTLE & GARDENS





# WALLED GARDEN – REPLACED A STANDING STONE WITH A CLASSICAL STONE URN – 2008



**DUNVEGAN**  
CASTLE & GARDENS



# INCA PYRAMID REPLACED BY THE 'DUNVEGAN PEBBLE', A ROTATING 2.7 TON MARBLE INTERACTIVE SCULPTURE – 2019



**DUNVEGAN**  
CASTLE & GARDENS



# DERELICT GARDEN SHED IN THE WALLED GARDEN RESTORED & TRANSFORMED INTO A GARDEN MUSEUM - 2011



  
**DUNVEGAN**  
CASTLE & GARDENS



# NEW PATHS, BRIDGES & IMPROVED DESIGN FEATURES APPLIED TO ALL AREAS OF DUNVEGAN CASTLE GARDENS – 2008/2020



**DUNVEGAN**  
CASTLE & GARDENS



# NEW PATHS, BRIDGES & IMPROVED DESIGN FEATURES CONT-D



**DUNVEGAN**  
CASTLE & GARDENS



# NEW PATHS, BRIDGES & IMPROVED DESIGN FEATURES CONT-D



**DUNVEGAN**  
CASTLE & GARDENS



# REFURBISHED GARDEN BOTHY 2014 & GARDEN GARAGE 2017



**DUNVEGAN**  
CASTLE & GARDENS



# NEW CASTLE GARDEN GATES BORROWING FROM THE STYLE & MOTIFS OF THE CASTLE'S MEMORIAL GATES - 2010

